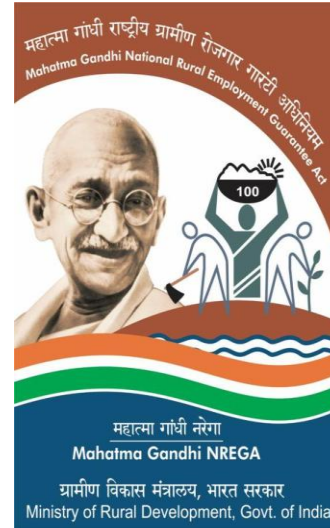


# Best Practices under MGNREGA in Rajasthan



**Department of Rural Development,  
Government of Rajasthan**

# The Context

- The status of water in the State is most critical.
- Rajasthan with more than 10.4% of the country's geographical area, supporting more than 5.5% of the human population & 18.70% of the livestock has only 1.16 % of the total surface water available in the country.
- Out of the total 142 desert blocks in the country, 85 blocks are in the State of Rajasthan.
- Out of 295 blocks in the state, only 30 blocks are in safe category.
- The average annual rainfall ranges from 100 mm in Jaisalmer to 900 mm in Jhalawar. Average annual rainfall of the State is 531mm.
- The State has witnessed frequent drought and famine conditions in the past fifty years.
- The per capita annual water availability in the State is about 780 cubic meter (Cum) against minimum requirement of 1000 Cum. It is feared that the availability would fall below 450 cum by the year 2050.
- As per the international accepted norms, availability of water below 500 cum is considered as absolute water scarcity.

# The Context .....

- Percentage of Gross irrigated area to gross cropped area is 39.68.
- Nearly 75 % of the state's population resides in rural region.
- In the past 69 years after Independence, occurrence of drought in as many as 60 years.
- The forest cover of the State contributes 4.19% to the national forest cover.
- On the basis of climatic conditions and agricultural practices, it has 10 agro-climatic zones.
- 33 districts, 295 blocks and 9894 Gram Panchayats.

## **A. Key Interventions under MGNREGA for NRM Works**



# 1. Water Conservation & Water Management :

- Renovation of old water bodies/Village Talab to develop through one 'Model Talab' in every Gram:
  - Inlet & Outlet,
  - Face wall,
  - Chabutra (common meeting place),
  - Walk way & Plantation (evening & morning walk)
  - Ghat (Bathing place),
  - Khura/Ramp (easy access to animal for drinking water)
- Renovation of Traditional Water Bodies-Bavdi
- Drainage line Treatment i.e. WHS, Anicut, MPT, Diggi etc.
- Soil Conservation Measures: Contour Trenching i.e. CCT, SGT, Deep CCT etc.

# Glimpses of Model Talab: Renovation of Water Bodies



# Glimpses of Model Talab: Renovation of Water Bodies



xzke iapk;r%& xMk esMfr;k iapk;r lfefr%&  
xfy;kdksV] ftyk Mwaxjiqj jktLFkku



xzke 2 ,lVhjh] Xkzke iapk;r gjhqjk] iapk;r lfefr laxfj;k] ftyk  
guqekux<+] jktLFkku



Xkzke o xzke iapk;r vjkbZ;kaokyh] iapk;r lfefr guqekux<+] ftyk guqekux<+] jktLFkkuA



# Glimpses of Model Talab: Baran



xzke iapk;r f<+dokuh  
] iapk;r lfefr 'kkgckn+] ftyk 'kkgckn jktLFkkuA



xzke iapk;r vUrkuk  
] iapk;r lfefr vV: +] ftyk 'kkgckn jktLFkkuA

# Glimpses for Renovation of Traditional Water Bodies-Bavdi





# DLT Chittorgarh





# Glimpses of WHS- Bhilwara



# Glimpses of WHS-Baran & Dungarpur

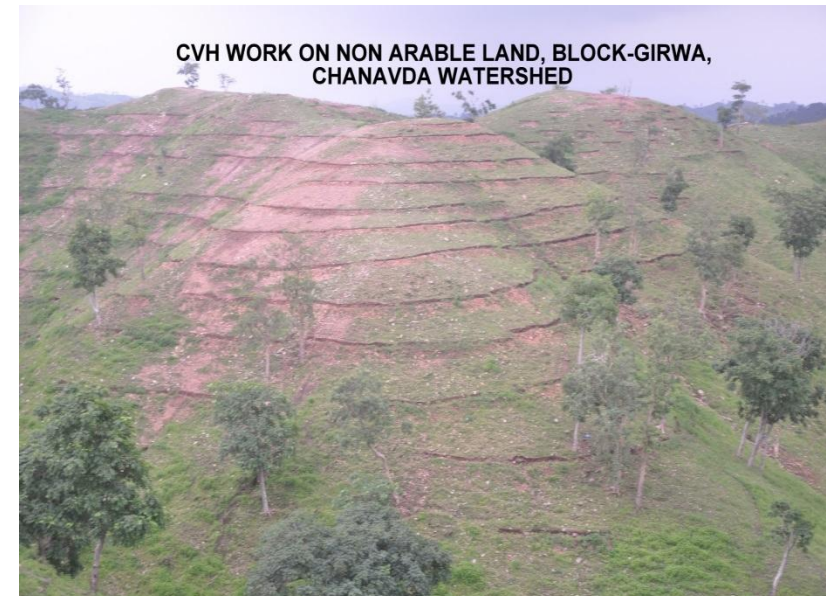




# Diggi-Ganganagar



# Soil Conservation Measures: Contour Trenching i.e. CCT, SGT, Deep CCT etc.





## 2. Irrigation Infrastructure Through MGNREGA

**There are two types of common Irrigation systems in state**

1. Canal Water based Irrigation System
2. Tank Water based Irrigation System

**Benefits of Irrigated Command Area:**

- Minimize wastage of water and enhance water use efficiency
- Ensure crop diversity and food security
- Play important role in water cycle
- Enables proper functionality of crop seasons
- Effective water use with the help of irrigation infrastructures reduces climate change impacts.
- It reduce adverse impacts of majors irrigation projects

# Irrigation Channel: Hanumangarh & Ganganagar





## Irrigation Channels



### **3. Harit-Dhara -An integrated approach under MGNREGA: A case study of Udaipur**

Under “Harit-Dhara” tanks transferred by irrigation department to PRI and tanks under irrigation department were sanctioned to ensure 100% water utilization:

#### **I. Community Works ( twin approaches)**

##### **A. Tank works**

1. Repair and Maintenance of Sluice Gates
2. Repair and Strengthening of earthen embankment through pitching and earth work to check seepage losses
3. Repair and Maintenance of waste weir and outlet system

##### **B. Distribution works**

1. Repair and Maintenance of old canal works
2. Desilting of canals.
3. Construction of New Pukka Canal works

#### **II. “UTTHAN” (Upliftment through Targeted and Holistic Approach in Mahatma Gandhi NREGA) for Individual beneficiary under “HARIT-DHARA”**



# Glimpses of Harit-Dhara : Irrigation Work - Pond, Well & Channel



## 4. Farm Pond with Solar light & Drip Irrigation : A Convergence Model in Nagaur

- A model of convergence among government departments & development banks, for increasing income sources and providing sustainable livelihood to farmer.
- Key stakeholders:
  1. MGNREGA
  2. Watershed & Soil Conservation
  3. Agricultural & Horticultural
  4. JLN Solar Mission
  5. NABARD



# Glimpses of Farm Pond : A Convergence Model in Nagaur



## 5. Initiatives Open Wells under MGNREGA: A case study of Banswara

- Banswara district, located in the southern Rajasthan, falls under Tribal Sub Plan Area having around 74% tribal population. The District lies in the Mahi River basin.
- Major crops in the district are maize, soybean and wheat. Average annual rainfall in the district is 846 mm which is much higher than the average rainfall of Rajasthan. Rural life depends on agriculture, around 30% of area being irrigated and rest being rain fed.
- Initiative for development of open Wells for transforming lives of STs families in Banswara
- During 2015-16, it was made a priority area for the district through consultation with public representatives at all levels. A wide awareness drive was initiated so that people can demand open wells through gram sabhas.
- The number of open wells sanctioned so far 7770 , to bring 4000 hectares under irrigation and enabling rural people to have option for two -three crops through irrigation.
- It has led to improvement in economic conditions, reduction in migration and enhances livelihood security by making them self dependent.



# Glimpses of Open Wells in Banswara



## 6. Pasture & Waste Land Development under MGNREGA

- Increase production of palatable Species of grasses, legumes and tree leaves.
- Reduces gap between availability and requirement of fodder
- Water harvesting improves soil moisture.
- Availability of fodder during lean period.
- Maintain Ecological balance.
- Strengthening resources base for livestock and enhancing livelihood security



## Glimpses of Pasture Land Developed





# Wasteland Developed- Chittorgarh



# Pasture Land Development- Rajsamand





# Pasture Land Development- Partapgarh





## 7. Panch-Phal Scheme: A Horticulture Initiative under MGNREGA

### Objectives of the scheme

- Removal of unauthorized encroachments from Pasture Land. 3745.92 hectares of Pasture Land was freed from 7471 encroachers through campaign mode.
- Creation environmental beneficial asset for future generations.
- To create income sources for Gram Panchayat.
- 173 works sanctioned of 5 hectares of land.
- Plantation of more than 1 lakh fruit plants on 133 work sites

# Glimpses of Panch-Phal Chittorgarh: Quality Assets Created





# Panch-Phal Chittorgarh: Quality Execution



# Initiatives for Girl Child Protection & Development *‘Rajshree Upvan’* under Mahatma Gandhi NREGA

- An innovative step has been taken for girl child protection & development named ‘Rajshree Upvan’ in 28 GPs of district **Bharatpur**
- This initiatives has taken clubbed with Panch-Fal (Horticultural & Pasture land Development) for community involvement & maintenance of common assets developed under Mahatma Gandhi NREGA
- Parent of Girl Child sensitized for plantation of 5 plants in identified Panch-Fal (Horticultural & Pasture land Development)
- This ‘Rajshree Upvan’ initiatives started in 2016-17 and works in progress



# Glimpses of Rajshri





# Glimpses of Rajshri



# Glimpses of Panch-Fal replication in Baran





## 8. Mukhyamantri Jal Swavlamban Abhiyan (MJSA)

- **Mukhyamantri Jal Swavlamban Abhiyan (MJSA)** launched in January 2016 and Coordinating by Department of Watershed & Soil Conservation, GoR
- **To make 21,000 villages self reliant on water, create 7 lakh WHS** in 4 years (2015-19)
- **Scientific way of ridge to valley treatment** – water budgeting, slope analysis, drainage density
- **Mass movement, '*Shramdaan*',** Crowd Sourcing- Cash/Machines
- **Convergence** of activities and funds of Mahatma Gandhi NREGA ,IWMP and State Funds
- **Technological interventions - GIS based mapping and Geo tagging**
- **MJSA has mandatory convergence with Mahatma Gandhi NREGA**

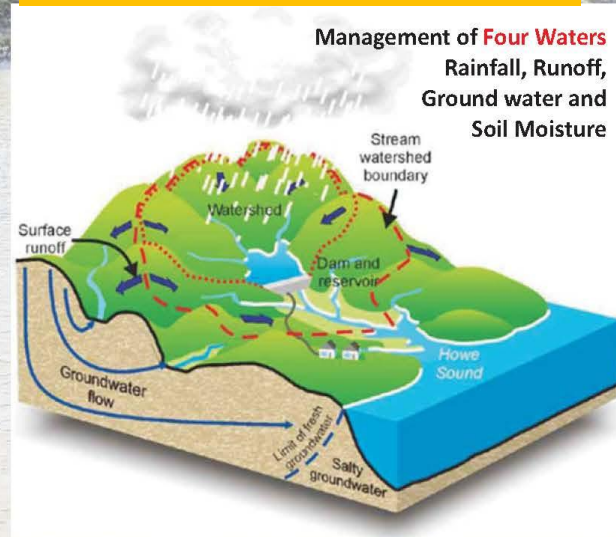


# Role of Mahatma Gandhi NREGA under MJSA

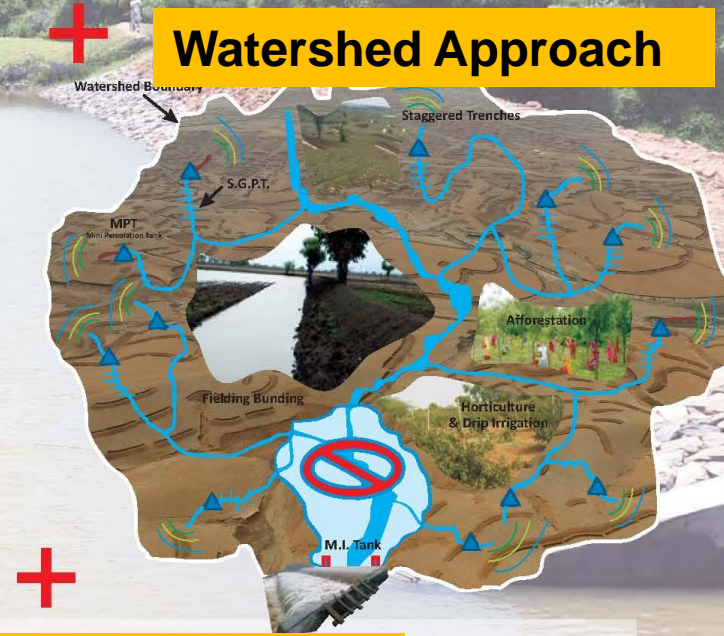
- Arrangements of fund, labour and material components for works included in DPR of MJSA, which are permissible under Mahatma Gandhi NREGA
- Execution of works in convergence with different schemes approved in DPR
- Social Audit of the works executed
- Individual beneficiary works

# Unique feature- Scientific Approach

## Four waters concept



## Watershed Approach



## Water Budgeting

- Assessment of water requirements (Drinking & Crop) of village
- Mapping the availability
- Analysis of how much can be harvested
- Plan the interventions to harvest
- Mobilising community for management of harvested water





# Glimpses MJSA in Rajasthan





# Glimpses MJSA in Rajasthan



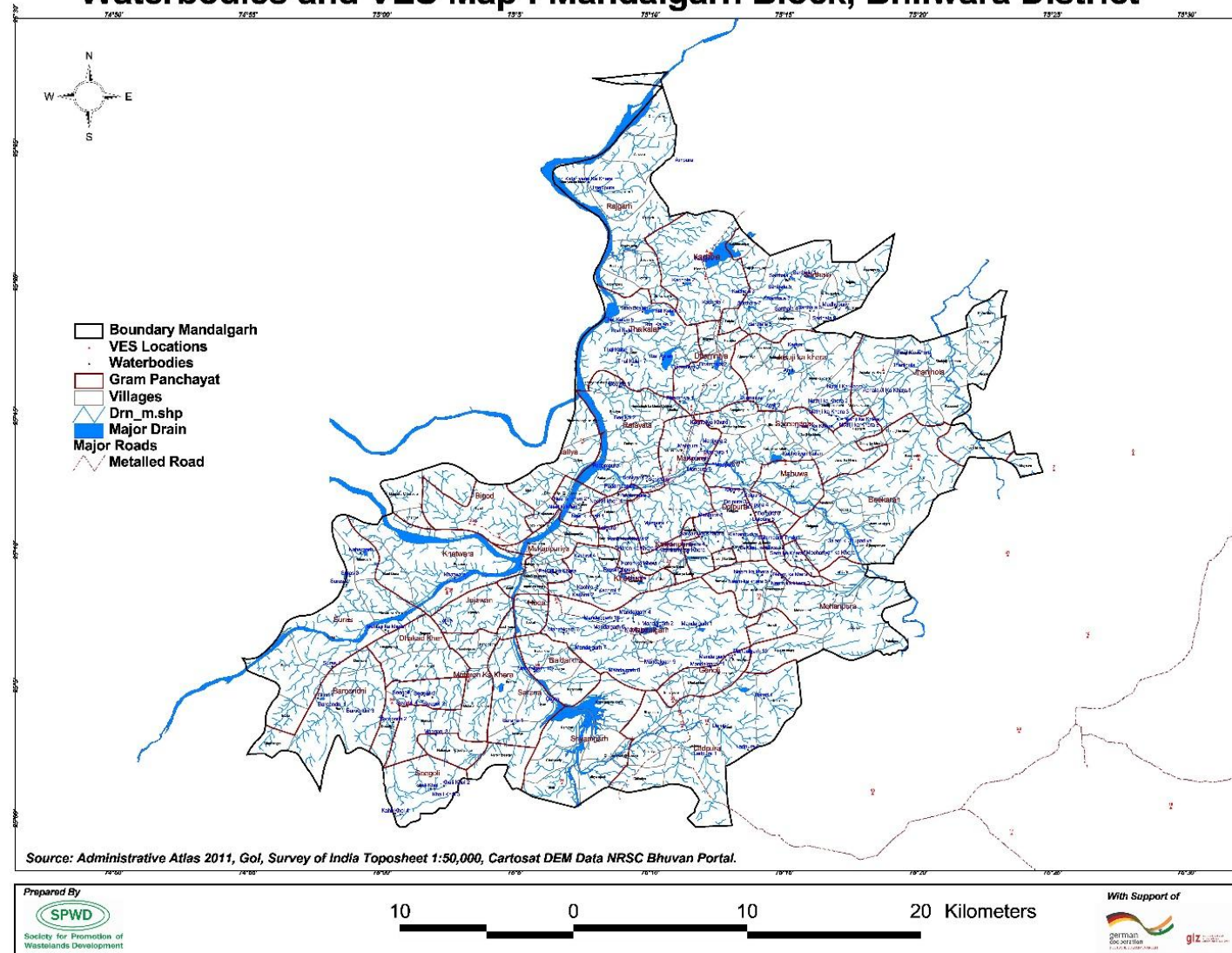


## 9. Implementation of Artificial Water Recharge in coordination with CGWB-MoWR

- Rajasthan has identified 2 blocks i.e. Mandalgarh, district Bhilwara and Riodar, District Shirohi on pilot basis for Implementation of Water Conservation/Artificial Recharge in coordination with MoWR-CGWB.
- State has decided to develop Geo-Informatics based holistic plan through converging funds available at district, which could helps to improve water stresses status of the blocks.
- The project cost would be ranging 100-150 crores crores per block, which could be dovetail from MGNREGA, District Mineral Fund, convergence with line departments etc.

# Identifying Water Bodies for Artificial Water Recharge Locations

## Waterbodies and VES Map : Mandalgarh Block, Bhilwara District





## 10. Individual Beneficiary Works : An initiatives creating sustainable livelihood

- The per household expenditure up to to 3.00 Lac.
- **Water Management** works i.e. WHS, check dam, anicuts,MPTs,CCTs etc.
- Irrigation facilities: Irrigation channel, farm pond, **Diggi, Tanka, Jalhoj and khadin** on appropriate locations.
- **Fishery** related works i.e. fish nurturing activities and fish drying yard.
- **Land Development** i.e. Land leveling, small WHS, silt application, development land in spring shed manner, protection measures (DCB & live-fencing).
- **Horticulture and agro-forestry** .
- **Organic Manure development** i.e. Vermi-Composting and NADEP compositing.

## Convergence with National Rural Livelihood Mission (NRLM)

- Rajasthan Grameen Aajeevika Vikas Parishad- RGAVP (nodal agency of SRLM) is working for Convergence with Category-B under Mahatma Gandhi NREGA for 40,000 SHG families.
- Govt. of Rajasthan Authorized Cluster Level Federation as PIA
- RGAVP authorized 42 CLF, Working as PIA in 10 districts.
- In 2nd phase 19 CLF will also work as PIA in 3 districts.



# Glimpses of Orientation of SHGs Members





## Glimpses of Assets created for Increasing Water Availability (Farm Pond)





## Glimpses of Assets created for Increasing Water Availability (Tanka & Open Well)





# Glimpses of Assets creating sustainable livelihood through Horticultural Plantation for Individual Beneficiaries



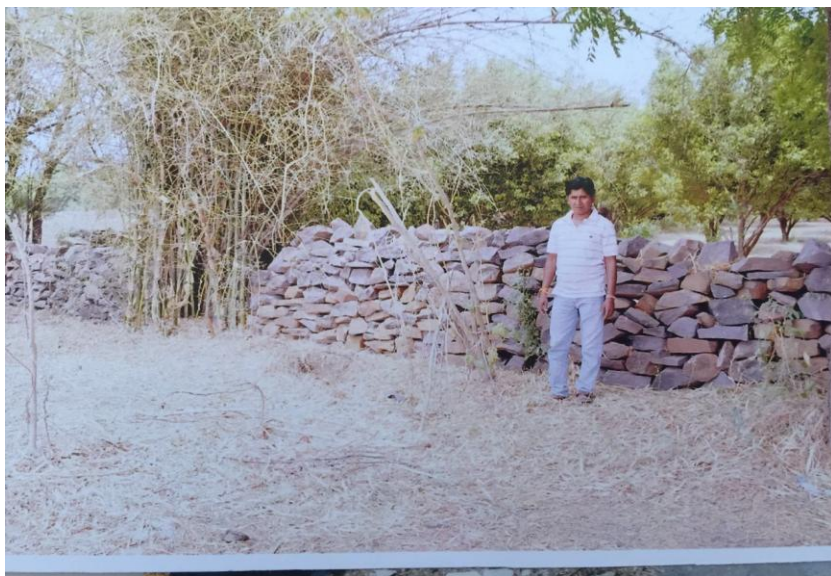


# Glimpses of Individual Beneficiaries Assets Developed For Livestock



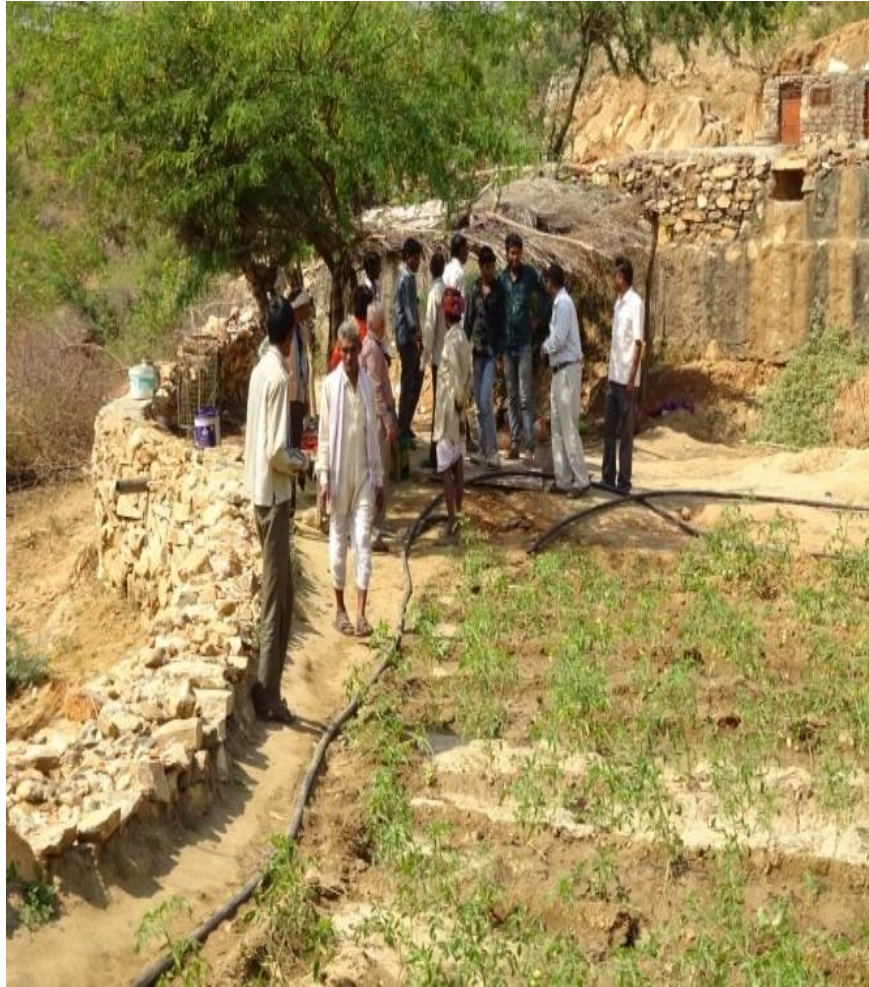


## Glimpses of Individual Beneficiaries Assets for Land Levelling & Fencing





## Glimpses of FRA (Forest Rights Act) Beneficiary land Development at Udaipur

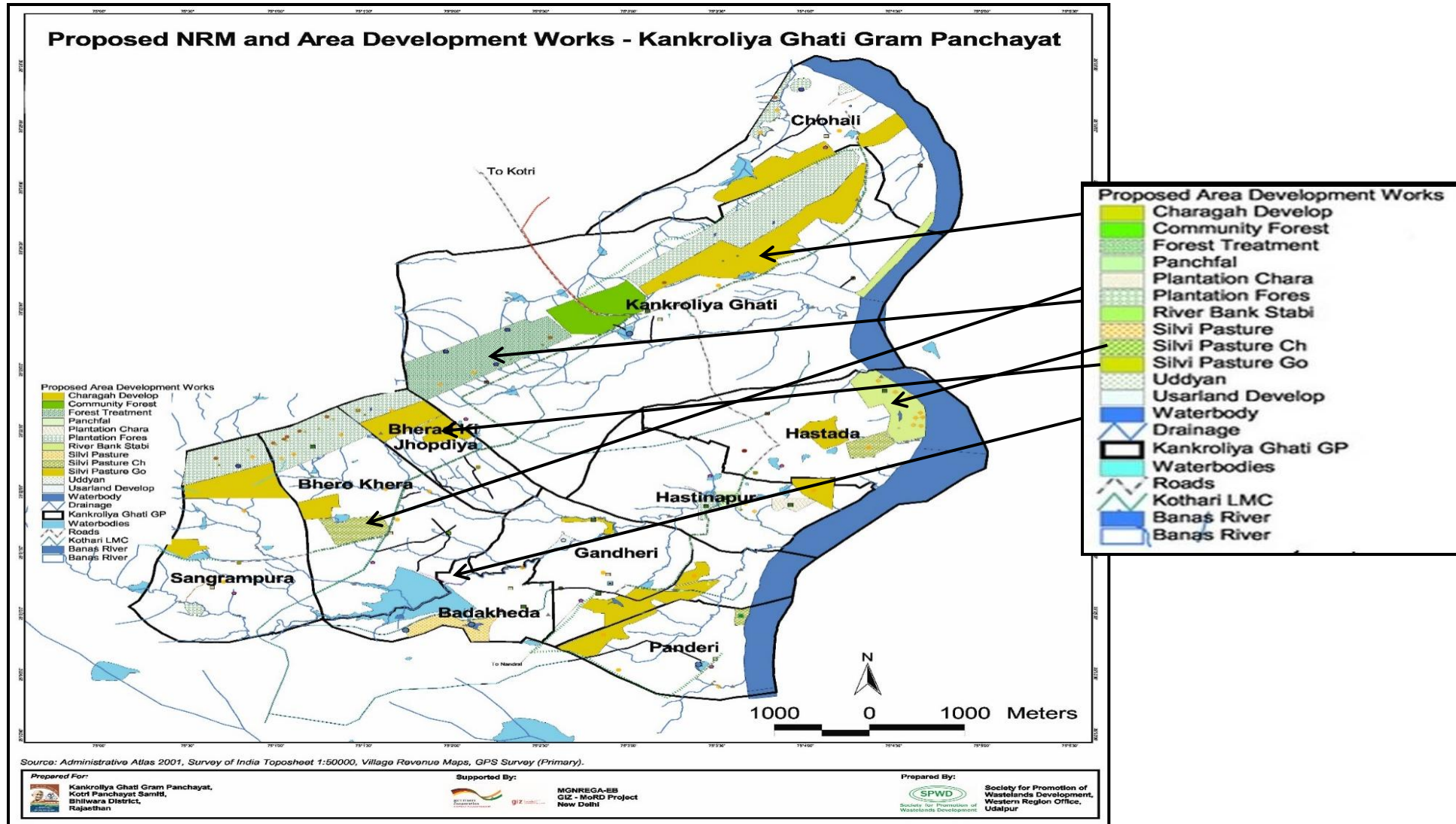


# 11. Application of GIS & Remote Sensing for prospecting and activity planning

- **A holistic/composite/ watershed principles based GP level INRM Plan** under MGNREGA supported by GIS technology is developed to complies mandatory provisions.
- Eleven 'SAKSHAM – GIS Facility Centres are set up to support the GIS-based INRM plan preparation at agro-climatic zones cum Divisional level
- Hon'ble Chief Minister, Rajasthan state has mentioned about 'SAKSHAM – GIS Facility Centers' for helping officials & GP to prepare GIS-based GP level INRM plan for MGNREGA, in the speech of 4th meeting of the governing council of NITI Aayog.
- State has targeted to prepare GP level INRM Plans under Mahatma Gandhi NREGA for entire 9894 by March, 2019 using Saksham GIS Facility Centre.
- GIZ is providing technical backstopping for operationalization of "Saksham GIS Facility Centre" and GP INRM plan preparation.



# MGNREGA Action Plan Map



## B. Rural Infrastructure Creation



## 12. Food grain storage Structures

- In compliance of the provisions of food security act, instruction has been given by state government to construct a 100 metric tons food godown in every Gram Panchayat
- These structures will be constructed under MGNREGA Scheme in convergence to other scheme of RD & PR
- Plantation activities are integral part of food godown

# Food grain storage Structures





## 13. Play Ground

- State government suggested to develop 'Play Ground' facilities at Gram Panchayat HQ.
- These structures are constructed under MGNREGA Scheme in convergence to other scheme of RD & PR.
- Plantation activities are integral part of Play Ground.
- These playing facilities are benefiting Children and Youth of the GP areas, which helps them to avail opportunities in sports, army and police services.

# Play ground - Bhilwara





# Play ground - Bhilwara



# Play Ground - Baran





# Play Ground - Karauli



# Play Ground - Sri Ganganagar





# Play Ground- Kota



# [ksy eSnku ds fp=

- xzke iapk;r u;k lkseslj*k* iapk;r lfefr ck;r*q* esa fufeZr [ksy eSnku&



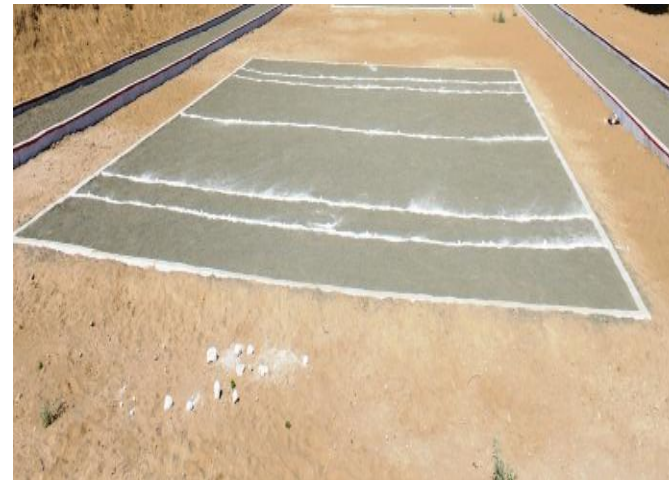
,FksysfVd V<sup>as</sup>d] dcM~Mh] ckWyhckWy  
eSnku



ckLdsVckWy ,oa isosfy;u fuekZ.k dk;Z



ckLdsVckWy ,oa isofy;u fuekZ.k dk;Z ckWyhckWy eSnku



dcM~Mh eSnku



# [ksy eSnku ds f[kykMh;ksa dks ykHk

- ckMesj ftys ds flgkxksa dk ryk xkao fuoklh Jh [ksrkjke us blh lky vxLr eas vk;ksftr fj;ks vkWyfEid [ksykksa esa eSjkFku nkSM eas Hkkjr dk izfrfuf/kRo dj 26oka LFkku izkIr dj ftys dk uke jkS'ku fd;k FkkA
- dkuksM+ fuoklh Jh lqesjflag jkBkSM ,oa lkseslj Jh nhikjke dh igpku varZjk"V<sup>a</sup>h; eSjkFku /kkod ,oa dzkWl d.V<sup>a</sup>h /kkod ds :i esa gSA
- jk- ek-fo- lqFkkjksa dk ryk xkao rks tqMks dk i;kZ; gh cu pqdk gSA ckMesj ftyk yxkrkj 2009 ls jk"V<sup>a</sup>h; Lrj ij Lo.kZ ind thr jgk gSA ckMesj ds f[kyfm;ksa us bl ckj l=g ind thr dj izns'k esa /kkd tekBZA



- blh xzke iapk;r {ks= ds varZjk"V<sup>a</sup>h; ,FkfyV  $\frac{1}{4}$ /kkod $\frac{1}{2}$  Jh nhikjke bl V<sup>a</sup>sd ij izfrfnu fu;fer :i ls Lo;a ,oa Ldwy ds fo/kkfFkZ;ksa dks nkSM+us dk vH;kl djokrs gSA
- Jh nhikjke 2018 esa vk;ksT; jk"V<sup>a</sup>e.Myh; ,fFkysfVd [ksykksa esa gkQ eSjkFku nkSM+ esa Hkkx ysus ds fy, vH;kljr gSA

# 14. Crematoria through Convergence

- State government suggested to develop Crematoria.
- These structures are constructed under MGNREGA Scheme in convergence to other scheme of RD & PR.
- The activities are undertaken :
  - Required infrastructure
  - Water facility for ritual
  - Plantation activities are integral part of the project



# Crematoria through Convergence



# 15. Panchayat Bhawan





## 16. Aganwadi through Convergence



## 17. IHHL under SBM at Ajmer





## 18. Road, Street and Drainage

# Glimpses of All Weather Road





## Glimpses of Road & Water Course



## Glimpses of block Street





## Glimpses of Drainage System



Thank You